



**A NEW WAY OF WORKING:  
EQUITABLE ALLOCATION FOR  
PHYSIOTHERAPY PLACEMENT  
PROVISION ACROSS THE NORTH  
WEST OF ENGLAND**

**PHILIPPA HILL**

*(PLACEMENT DEVELOPMENT MANAGER, NWPDN)*

**JO NICHOLSON & SOPHIE TAYLOR**

*(SENIOR LECTURERS IN PHYSIOTHERAPY AND PRACTICE PLACEMENT CO-  
ORDINATORS, MMU)*

# BACKGROUND



## TRADITIONALLY 'OFFERS BASED SYSTEM'

- **MMU**
- **UCLAN**
- **UNIVERSITY OF CUMBRIA**
- **UNIVERSITY OF LIVERPOOL**
- **UNIVERSITY OF SALFORD**

3 REGIONS, 5 HEI'S, 40 NHS  
TRUSTS & NO GENUINE  
STRATEGIC OVERVIEW

# 2012-13 - **281** SHORTFALLS



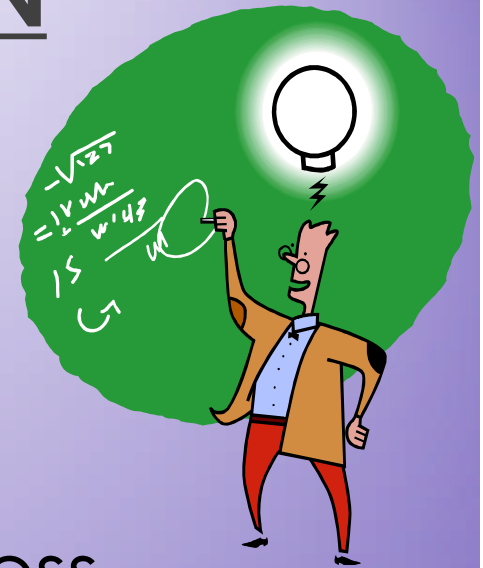
**2013 – HEE (NW))  
TASKED THE NWPDN TO  
DEVELOP AND  
IMPLEMENT A MORE  
ROBUST AND EQUITABLE  
PROCESS TO PROCURE  
PLACEMENTS**

## **EQUITABLE ALLOCATION PROCESS :**

- **DEVISE A FORMULA - MINIMUM CAPACITY PER TRUST**
- **IMPROVE COMMUNICATION BETWEEN ALL STAKEHOLDERS**
- **IMPLEMENT A SYSTEM TO CAPTURE & UPDATE ACCURATE PHYSIOTHERAPY PROVISION**
- **FORWARD PLAN TIMELY ALLOCATIONS**
- **REDUCE THE OCCURRENCE OF SHORTFALLS BY 20% EACH YEAR**

# FORMULA/CALCULATION

1. WHOLE TIME EQUIVALENT (WTE) WORKFORCE FIGURES ACROSS NORTH WEST (APPROX 2600)
2. CALCULATED % OF TOTAL WTE PRACTITIONERS PER TRUST (EG 50 WTE =2%)
3. TOTAL NUMBER OF PLACEMENTS REQUIRED ACROSS NW AS BASELINE (APPROX 1700)
4. USING % FIGURE OF WTE PER TRUST MINIMUM QUOTA CALCULATED (2.% OF 1700 = 34.5)
5. MINIMUM QUOTA EQUATED TO 65% OF TOTAL WTE (PHYSIO/STUDENT RATIO 3:2) 50 STAFF:35 STUDENTS



# EAP MINIMUM QUOTA – TEMPLATE

*(BASED UPON 2600 WTE STAFF AND 1700 PLACEMENTS)*

TRUST	WTE Practitioners	% of total NW WTE	Minimum quota students
An Acute Hospital Trust, Somewhere	<b>82.4</b>	<b>3.1%</b>	<b>55</b>
A Community Trust, Somewhere Else	<b>38</b>	<b>1.4%</b>	<b>25</b>
A Big Teaching Hospital, Next Town	<b>130.5</b>	<b>4.9%</b>	<b>86</b>

# **TEMPLATE CAPTURES:**

- **EQUITABLE ALLOCATION FIGURE ALLOCATED TO THE TRUST**
- **HOW THIS ALLOCATION IS 'SHARED' ACROSS THE HEI'S**
- **CURRENT SERVICES/POTENTIAL PLACEMENTS WITHIN TRUSTS**
- **KEY INFO RE PLACEMENTS (EG CAR USER REQUIRED)**
- **PLACEMENT REQUESTS FROM HEIS**
- **FINAL CONFIRMATION OF AGREED PLACEMENTS**



Trust organisation	The Healthy Trust											
Lead student co-ordinator contact details	Jo Bloggs 0161 999 9999		<a href="#">PEF Details</a>	Little and Large 0161 222 3333	-	-						
Minimum fixed student placements required as per Equitable Allocation Process	9	Designated Quota of Student Placements for each HEI	MMU	UCLan	University of Cumbria	University of Salford	University of Liverpool	KEY		NWPDN to Complete		
			6	0	0	2	1	Trust to Complete		HE I to complete		
Base (Including Postcode)	Specialism/S specific Experience (i.e. Orthopaedic / Stroke)	Maximum number students at one time per placement	Maximum Number of placements per year	Comments (eg. Yr 3, car owner, female)	Clinical Lead (Name, email & telephone number)	Date of placement	Number of students	Placement name / number eg PP1, hub, spoke	HEI	Trust confirmation	HEI Acceptance	
The Healthy Trust OH1 222	MsK OP	1	4		Aled Jones 0161 444 6666	09/10/17-10/11/17	1	BSc Placement 4	MMU	YES	YES	
						13/11/17 - 15/12/17	1	PBL4	UOS	YES	YES	
						08/01/18 - 09/02/18	1	MSc Placement 3	MMU	YES	YES	
						07/05/18-08/06/18	1	BSc Placement 3	MMU	YES	YES	
						30/7/18 - 31/8/18	1	PBL3 PT	UOS	YES	YES	
The Healthy Trust OH1 222	Surgery/Critical care Oncology	1	3		Jess Ennis 0161 777 5555	26/03/18 - 27/04/18	1	BSc Placement 2	MMU	YES	YES	
						05/02/18 - 09/03/18	2	BSc Placement 1	MMU	NO	-	
The Healthy Trust OH1 222	Intermediate care	1	2	Car driver required	Ant and Dec 0161 888 0000	07/05/18-08/06/18	1	BSc Placement 3	MMU	YES	YES	
						30/7/18 - 31/08/18	1	MSc Placement 4	MMU	YES	YES	
				Maximum of two students across all three areas at one time.	Clinical Lead will be Téresa May 0161 444 3939							

# WORKING IN PARTNERSHIP WITH THE NORTH WEST HEIS & TRUSTS

- **EACH HEI TAKES THE 'LEAD' ON COMMUNICATING WITH 'OWN' TRUSTS**
- **TIMELINES ARE AGREED AT THE START OF THE PROCESS IN JANUARY**
- **ALL ALLOCATIONS ARE AGREED BY HEI'S/TRUSTS BY JUNE**
- **OUTSTANDING CAPACITY SHARED TO COVER ANY SHORTFALLS**
- **EDUCATORS AND STUDENTS INFORMED 6 WEEKS IN ADVANCE**
- **3 WEEKS CANCELLATION AGREEMENT**

1 NWPDN calculates WTE, adapts/changes/updates templates & return to HEI (approx. 7 months before year start – mid February)

2 Lead HEI check & confirm all details, link to PARE and share with other HEIs to begin population (end of February)

3 HEI complete own requirements and compile all HEI's requests, all 5 HEI's meet to identify clashes and resolve any outstanding needs (End of April)

4 Lead HEI sends finalised template to Trust within 2 weeks, Trusts invited to meet/negotiate and resolve any issues by end of May

5 HEI's meet and negotiate any outstanding requirements (Mid June)

6 Each HEI identifies any spare capacity and shares it with other HEI's (End of June)

7 Lead HEI to send out completed finalised template to Clinical Leads and PEFs (both NHS and Non NHS) by early July

## EAP OUTCOME :

- ✓ **DEVISE A FORMULA - NOW FIXED CAPACITY & PROCESS FOR CONCERNS IN PLACE**
- ✓ **IMPROVED COMMUNICATION – ALL KEY STAKEHOLDERS NOW WORK COLLABORATIVELY**
- ✓ **IMPLEMENT SYSTEM TO CAPTURE & UPDATE ACCURATE INFORMATION - ON-GOING**
- ✓ **FORWARD PLAN TIMELY ALLOCATIONS - IMPLEMENTED & PROCESS NOW IN PLACE TO ADDRESS ANY ISSUES**
- ✓ **REDUCE SHORTFALLS BY 20% EACH YEAR -**  
2013-14 – 146, 2014-15 – 66, 2015-16 - 69,  
CURRENT YEAR - 6

# WHAT NEXT?



- **FIXED CAPACITY**
- **NON-COMMISSIONS  
(REMOVAL OF BURSARY)**
- **PRIVATE SECTOR &  
TRANSFER OF NHS  
SERVICES**
- **FUNDING/TARIFF**

# KEY FACTORS TO MAINTAIN SUCCESS!



- **EFFECTIVE COMMUNICATION**
- **STAKEHOLDERS WORK TRANSPARENTLY & COLLABORATIVELY**
- **SHORTFALLS MANAGED EFFICIENTLY**
- **NWPDN CONTINUE TO OVERSEE STRATEGICALLY**

**ANY QUESTIONS?**

**PHILIPPA.HILL@UHSM.NHS.UK**

**J.NICHOLSON@MMU.AC.UK**

**S.TAYLOR@MMU.AC.UK**

*THANK YOU*